



# Transperineal Needle Guide (GTK150)

*Contact:*

[sales@usmedicalinn.com](mailto:sales@usmedicalinn.com)

[www.usmedicalinn.com](http://www.usmedicalinn.com)

+1 (305) 772-3806



# GTK150

**Transperineal biopsy needle guide** is a disposable medical product used for guidance of biopsy needles together with Transrectal USG probes.

## Features:

- US-guided transperineal prostate procedures and biopsies
- Sterile & Disposable
- The disposable design reduces the risks of infection & cross contamination
- All disposable needle guides are compatible with 15G-16G-17G-18G sized instruments
- FDA Cleared



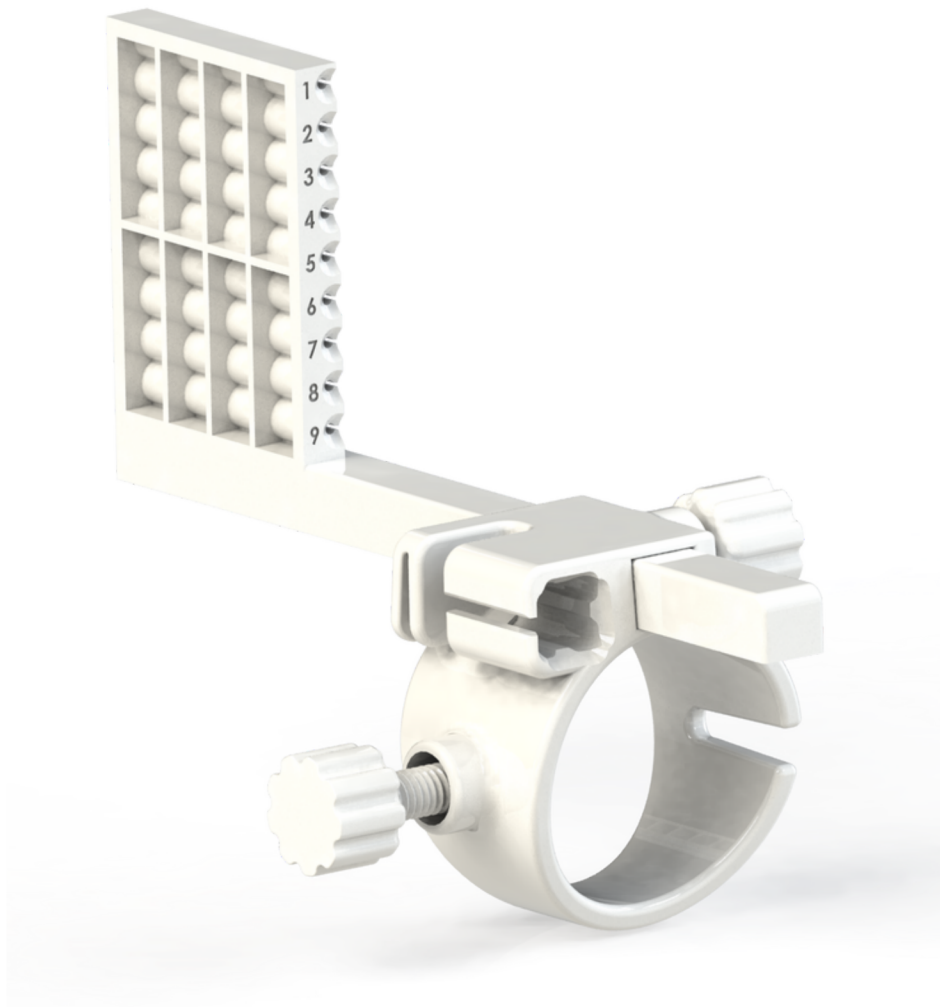
[sales@usmedicalinn.com](mailto:sales@usmedicalinn.com)

[www.usmedicalinn.com](http://www.usmedicalinn.com)

+1 (305) 772-3806

# GTK150

## Compatible probes



**BK:**

**BK8818**

**BK8848**

**BK9048**





# GTK150

## Ordering information

US Medical Catalog Number	Description
<b>GTK150</b>	<b>Needle Guide Only</b>
<b>GTK150-P</b>	<b>Needle Guide + Probe Cover</b>
<b>GTKS150</b>	<b>Needle Guide + Probe Cover + Sterile USG Gel</b>



[sales@usmedicalinn.com](mailto:sales@usmedicalinn.com)

[www.usmedicalinn.com](http://www.usmedicalinn.com)

+1 (305) 772-3806